



THE ART OF SIDING

V-JOINT TONGUE & GROOVE (RED CEDAR)

VJE

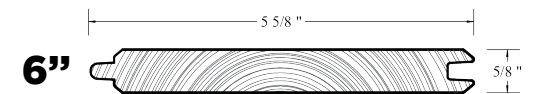
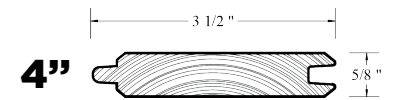
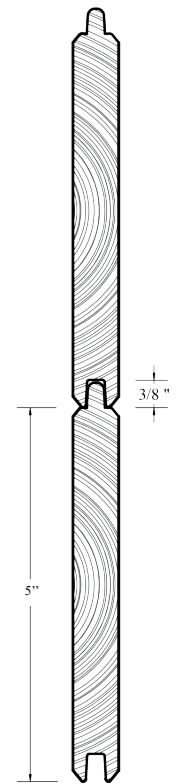
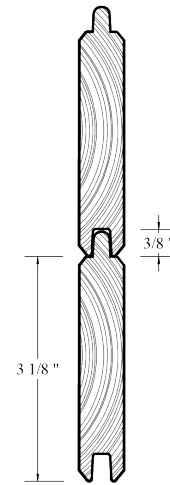


VJE0014

VJE0016

4"

6"



 DISTINCTIVE SIDING

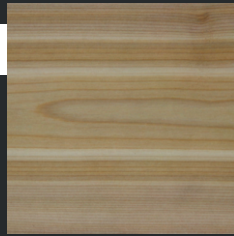
OTHER SPECIFICATIONS

Please refer our website's siding design tool to browse potential combinations and other available options.

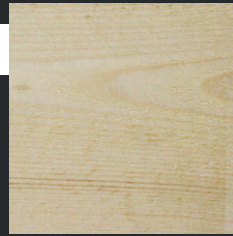
SPECIES



WHITE CEDAR



RED CEDAR



SPRUCE

WIDTHS



4"



6"



8"

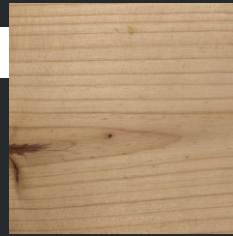
FINISHES



TEXTURED



BRUSHED

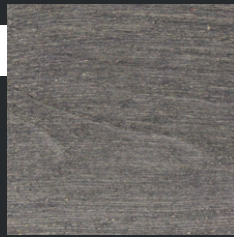


SANDED

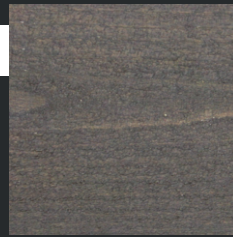
COATINGS



OPAQUE



TWO-TONE



SEMI-TRANSPARENT

WARRANTIES



OPAQUE



TWO-TONE



SEMI-TRANSPARENT



Siding stained on 6 surfaces.
4-16' lengths (min. 75% of 14-16' for standard spruce products).
Drying 10-12% RH.

* Conditions apply.